

SAAF™ Machine Intake Filter

MULTI-STAGE TOTAL CLEAN AIR SYSTEMS

- Specifically designed for machine air intakes within hostile air quality environments, such as industrial manufacturing facilities, mining, smelting, petrochemical, and pulp and paper processing
- Combines decades of AAF's air filtration expertise in gas turbine and complex machine air intakes
- Incorporates AAF low pressure drop, enhanced performance air filtration technologies for high efficiency, high capacity, maintenance-effective solutions
- Patented SAAF Seal sealing system design and manufacturing process. Patents covered under US 7,588,629 B2

Air Intake Filtration Reduces Machine Operating Costs

SAAF Machine Intake Filter (MIF) solutions are designed to scrub air prior to the intake of any machine that compresses air or uses air for cooling. By limiting corrosion and fouling of sensitive internal components, machine life and performance are increased and maintenance costs are reduced.

The adverse effect of contaminated ambient air drawn into machine air intakes is well documented. Airborne particulates and gases drawn into machine air intakes, with poorly cleaned air, will cause machine reliability problems. Typical examples are:

- Contaminated air is known to cause premature failure of DC windings in motors in paper mill environments.
- Air compressors often have intercoolers constructed of copper and housings from cast iron. These metals will corrode quickly when exposed to environments such as those that are typical at petrochemical refineries, steel mills, mines, smelters, and other industrial plants.

SAAF MIF is a complete air filtration solution for machine air intakes. The particulate filters are chosen to provide high capacity, high efficiency particulate removal in the most polluted environments. The SAAF Cassettes included efficiently remove corrosive gases from the airstream. AAF's patented sealing system prevents bypass of unfiltered air. The air delivered into the machine is thoroughly cleaned and will enable the machine to function at high efficiency and with longer maintenance cycles.

Sealing System Prevents Filter Bypass

AAF's patented SAAF Seal high integrity sealing system prevents bypass of unfiltered air. Cassettes and filters are locked in place by a combination of cassette notches and cassette locator bars.

Revolutionary High Efficiency Gas-phase Filter Sealing System

Designed to maintain optimal positioning of the cassettes, the locator bar compresses the cassettes into the sealing gasket. This unique system is completely effective and ensures exceptional filter efficiency.



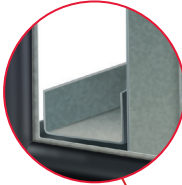
Certified Energy Efficient

SAAF™ Machine Intake Filter

Rain louver/birdscreen at the inlet is available as an option for outdoor installation.

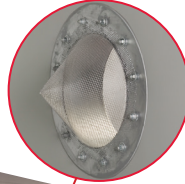


Weather cover with drip-edge is available as an option for outdoor installation.



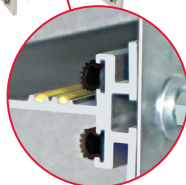
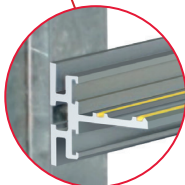
2" Prefilter track

Metal mesh screen and cone protection



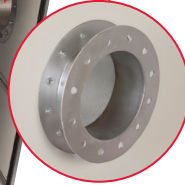
Heavy-duty channel base

The cassette support track (non-sealing face shown above) is constructed of extruded aluminum.

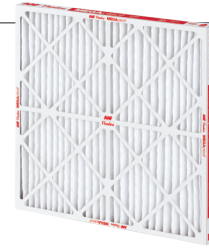


AAF's track installation method provides trouble-free filter installations and changeouts. Precise connections between support tracks and the track support post ensure accurate filter spacing for superior efficiency.

The cassette support track (sealing face shown) is constructed of extruded aluminum with the cassette locating bar, gasket for sealing.

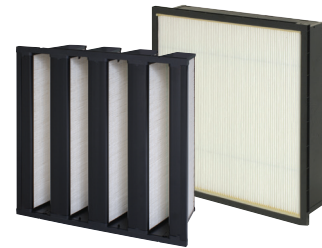


Outlet flange



High Capacity Prefilters

MEGApleat M8 filters are ideal MERV 8 prefilters used to prevent the buildup of lint and dust on the face of the SAAF cassettes and high efficiency filters.



High Efficiency Final Filters

Accommodates a high efficiency machinery air intake grade particulate filter, such as DuraVee™ XL and VariCel® M-Pak filters, in the final filter bank to ensure that filtered air meets the highest levels of efficiency.



SAAF™ Cassettes

Designed to hold SAAF Cassette Medium Duty and SAAF Cassette Heavy Duty.

Product Model Designations

The SAAF Machine Intake Filter model is designated as follows:

MIF - 604 - RL/BS - 12P - HD - HD - HD - 2P - 12F - P/MF

Machine Intake Filter

Nominally 6' high x 4' wide

Rain louver/birdscreen at air intake

Multiple options of prefiltration specifically designed for machine air intakes. The number in "12P," "2P," and "12F" denotes the nominal depth of the filter in inches.

First gas-phase chemical filter bank supports HD type cassettes (MD type cassettes can be used as an alternative).

Second gas-phase chemical filter bank supports HD type cassettes.

Third gas-phase chemical filter bank supports HD type cassettes.

Plenum with metal mesh outlet screen and machine intake matching flange

Machine intake filter grade high efficiency, low pressure drop filtration pass

Machine intake filter grade afterfilter option

VariCel® is a registered trademark of AAF International in the U.S. and other countries.



9920 Corporate Campus Drive, Suite 2200, Louisville, KY 40223-5690
888.223.2003 Fax 888.223.6500 | aafintl.com

AAF has a policy of continuous product research and improvement. We reserve the right to change design and specifications without notice.

©2023 AAF International and its affiliated companies.

ISO Certified Firm

GPF-1-117C 12/23