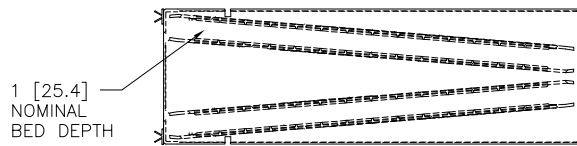
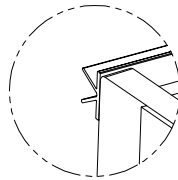


LTR.	CHANGE	CK'D	DATE	APPR	DATE
A	NOTES 1&6 RVS'D.; NOTE 9 ADDED KWM 20 JUN06		7AUG06		7AUG06



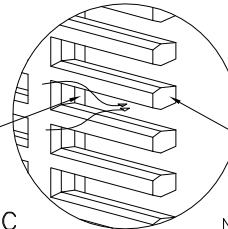
VIEW 'A-A'
BED ARRANGEMENT



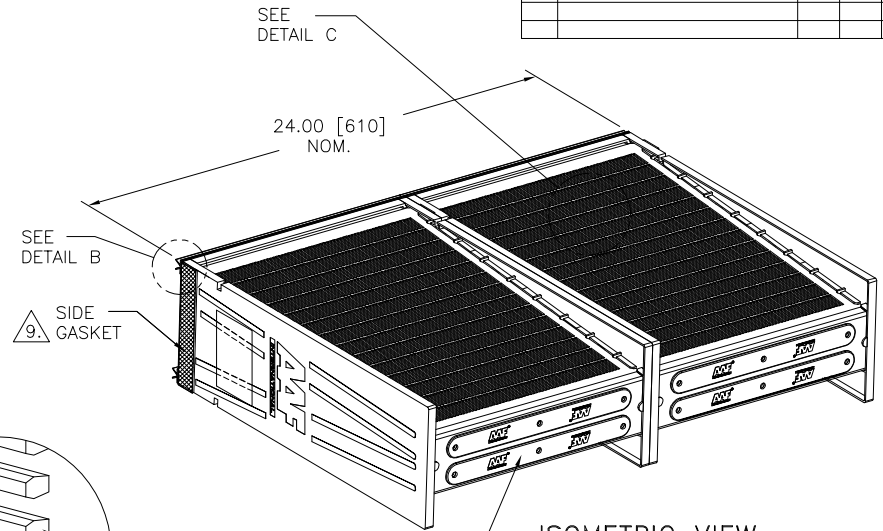
DETAIL B
BUTTERFLY SEAL



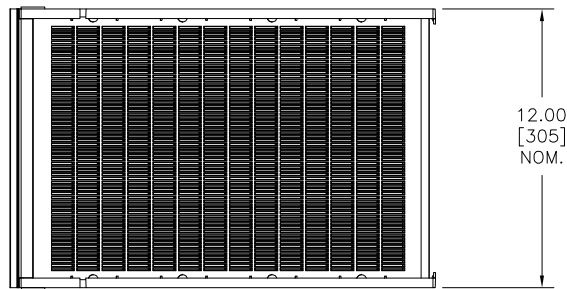
DETAIL D
AIR FLOW



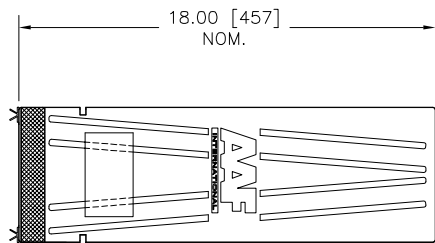
DETAIL C
AERODYNAMICALLY
TAPERED INLET GRID



ISOMETRIC VIEW



PLAN



ELEVATION



END VIEW

NOTES:

1. MATERIALS OF CONSTRUCTION: HIGH-IMPACT POLYSTYRENE
2. WEIGHT OF CASSETTE (EMPTY): TO BE ADVISED
3. WEIGHT OF CASSETTE (FILLED): TO BE ADVISED
4. VOLUME OF FILTER MEDIA: 0.5 CU. FT. [.0142 cu. m] NOMINAL
5. TYPICAL DESIGN AIR FLOW: 500 F.P.M. [2.54 m/sec.]
OR 500 C.F.M. [849.51 cm/hr] PER CASSETTE
6. PRESSURE LOSS AT TYPICAL DESIGN AIRFLOW: : SAAF OXIDANT: 0.31" W.G. [0.08 KPA]
SAAF CARB : 0.35" W.G. [0.09 KPA]
SAAF BLEND : 0.34" W.G. [0.08 KPA]
7. ONE CASSETTE IS MADE UP OF 2 HALVES FOR EASE OF HANDLING AND INSTALLATION.
8. THE LOCATING NOTCH POSITIONS THE CASSETTE FOR HIGH EFFICIENCY SEALING IN AAF ENCLOSURES.
9. SIDE GASKETS ARE SHIPPED SEPARATELY FOR INSTALLATION IN THE FIELD WHEN CASSETTES ARE TO BE INSTALLED IN SIDE ACCESS HOUSINGS. SIDE GASKETS ARE NOT REQUIRED FOR CASSETTES THAT ARE USED IN FRONT ACCESS HOUSINGS. REFER TO GASKET INSTALLATION INSTRUCTION (018-000-003) FOUND IN COMPONENT BAG SHIPPED WITH CASSETTE.

90C-3022522

A

NEXT ASSEMBLY

Tolerance Unless Otherwise Specified: ± 1/32 ± .80	Material	NOTED		Confidential Property of AAF-EP P.O. Box 35690 Louisville, Ky. 40232-5690
	Scale	Ckd. H.D.	Date 12 JAN 06	
	DATE 10 JAN 06	APPR. K.O.	Date 12 JAN 06	
FILTER ASS'Y., SAAF MEDIUM DUTY CASSETTE (RECYCLABLE PLASTIC) SC. MD. RP.				SHEET SIZE C
				SECTION NO. 90C-3022522