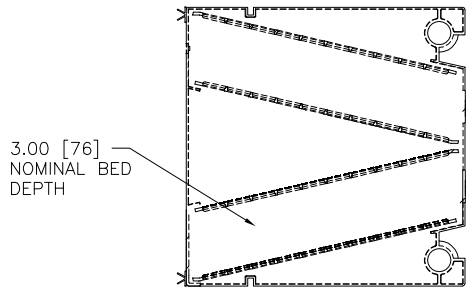
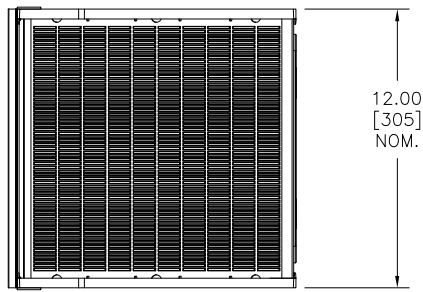


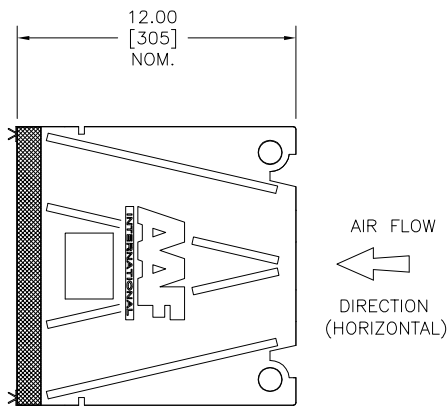
LTR.	CHANGE	CK'D	DATE	APPR	DATE
A	NOTES 1 & 6 RVS'D.; NOTE 9 ADDED				
	KWM 20 JUN06		7AUG06		7AUG06



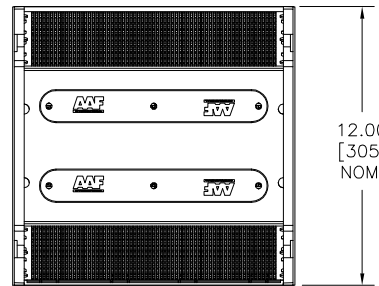
VIEW 'A-A'
BED ARRANGEMENT



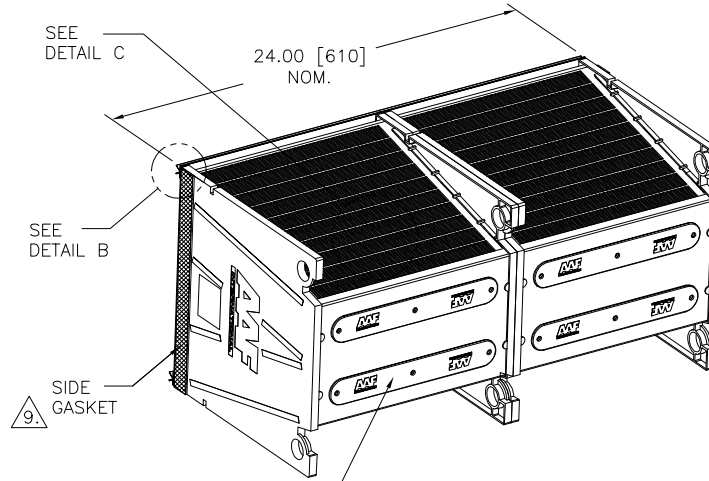
PLAN



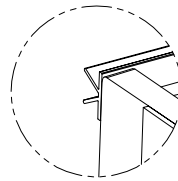
ELEVATION



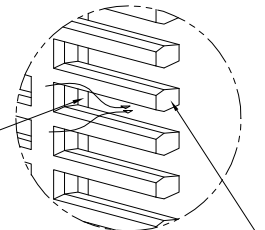
END VIEW



ISOMETRIC VIEW



DETAIL B
BUTTERFLY SEAL



DETAIL C
AERODYNAMICALLY
TAPERED INLET GRID



DETAIL D
AIR FLOW

NOTES:

1. MATERIALS OF CONSTRUCTION: HIGH-IMPACT POLYSTYRENE
2. WEIGHT OF CASSETTE (EMPTY): TO BE ADVISED
3. WEIGHT OF CASSETTE (FILLED): TO BE ADVISED
4. VOLUME OF FILTER MEDIA: 1 CU. FT. [.0283 cu. m] NOMINAL
5. TYPICAL DESIGN AIR FLOW: 250 F.P.M. [1.27 m/sec.]
OR 500 C.F.M. [844.5 cm/hour] PER CASSETTE
6. PRESSURE LOSS AT TYPICAL DESIGN AIRFLOW: SAAF OXIDANT: 0.73" W.G. [0.18 kPa]
SAAF CARB : 0.87" W.G. [0.20 kPa]
SAAF BLEND : 0.97" W.G. [0.24 kPa]
7. ONE CASSETTE IS MADE UP OF 2 HALVES FOR EASE OF HANDLING AND INSTALLATION.
8. THE LOCATING NOTCH POSITIONS THE CASSETTE FOR HIGH EFFICIENCY SEALING IN AAF ENCLOSURES.
9. SIDE GASKETS ARE SHIPPED SEPERATELY FOR INSTALLATION IN THE FIELD WHEN CASSETTES ARE TO BE INSTALLED IN SIDE ACCESS HOUSINGS. SIDE GASKETS ARE NOT REQUIRED FOR CASSETTES THAT ARE USED IN FRONT ACCESS HOUSINGS. REFER TO GASKET INSTALLATION INSTRUCTION (018-000-003) FOUND IN COMPONENT BAG SHIPPED WITH CASSETTE.

90C-3022514

A

B

A

Tolerance Unless Otherwise Specified: ±1/32 [±.80]	Material	NOTED		Confidential Property of AAF-EP P.O. Box 35690 Louisville, Ky. 40232-5690	
	Scale	Ckd. H.D.	Date 12 JAN 06		
	Drawn by MARTIN	Date 10 JAN 06	Appr. K.O.	Date 12 JAN 06	
FILTER ASS'Y., SAAF HEAVY DUTY CASSETTE (RECYCLABLE PLASTIC) SC. HD. RP.					SHEET SIZE C
					SECTION NO. 90C-3022514